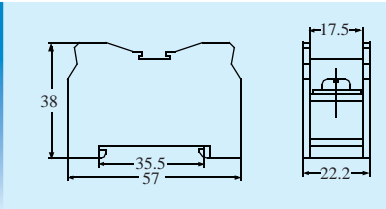


TERMINAL BLOCK SERIES 固定式端子台

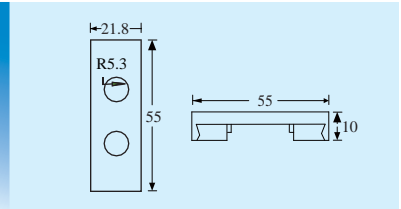
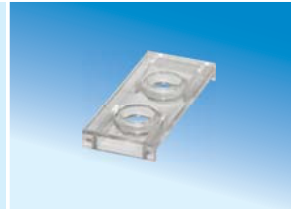
SPECIFICATION 規格

Specification 規格	IN61BK	IN101BK	IN201BK	IN401BK
Current 電流	60A	100A	200A	400A
Voltage 電壓	600V			
Cross-Section 截面	22mm ²	38mm ²	100mm ²	200mm ²
Clamping Screw 鎖緊螺絲	M6	M8	M10	M12
Pole 極	1	1	1	1
Insulated Materials 絕緣材料	PC(PA66)			
Operating Temperature (°C) 操作溫度 (5°C)	-40°C + 110°C (max +220°C)			
Conductor 導體	Copper, Nickel Plated 黃銅, 電鍍鎳			

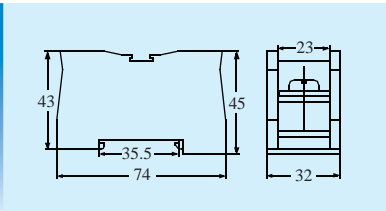
IN61BK



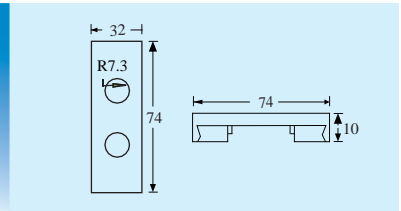
IN61C



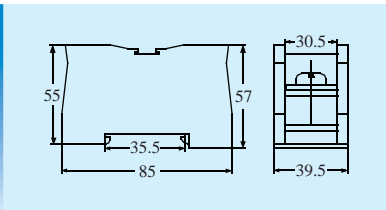
IN101BK



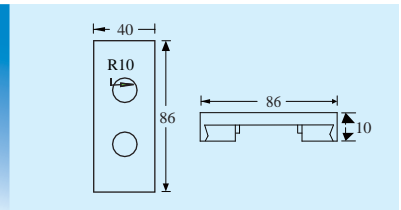
IN101C



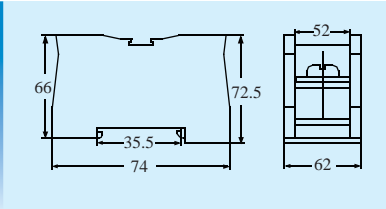
IN201BK



IN201C



IN401BK



IN401C

